

Walkability Audit

08/01/2020



Knockmahon NS

Bonmahon
Co. Waterford

Roll Number: 18077L

School description

Knockmahon National school is a 2 teacher coeducational primary school on the outskirts of Bonmahon. There is currently 21 students enrolled



A **Walkability Audit** is a methodical examination of how pedestrian-friendly a route may or may not be.

The word **Walkability** means the “**ability to walk**”.

What did we do?

Members of the school population identified a possible walking route to school to audit.



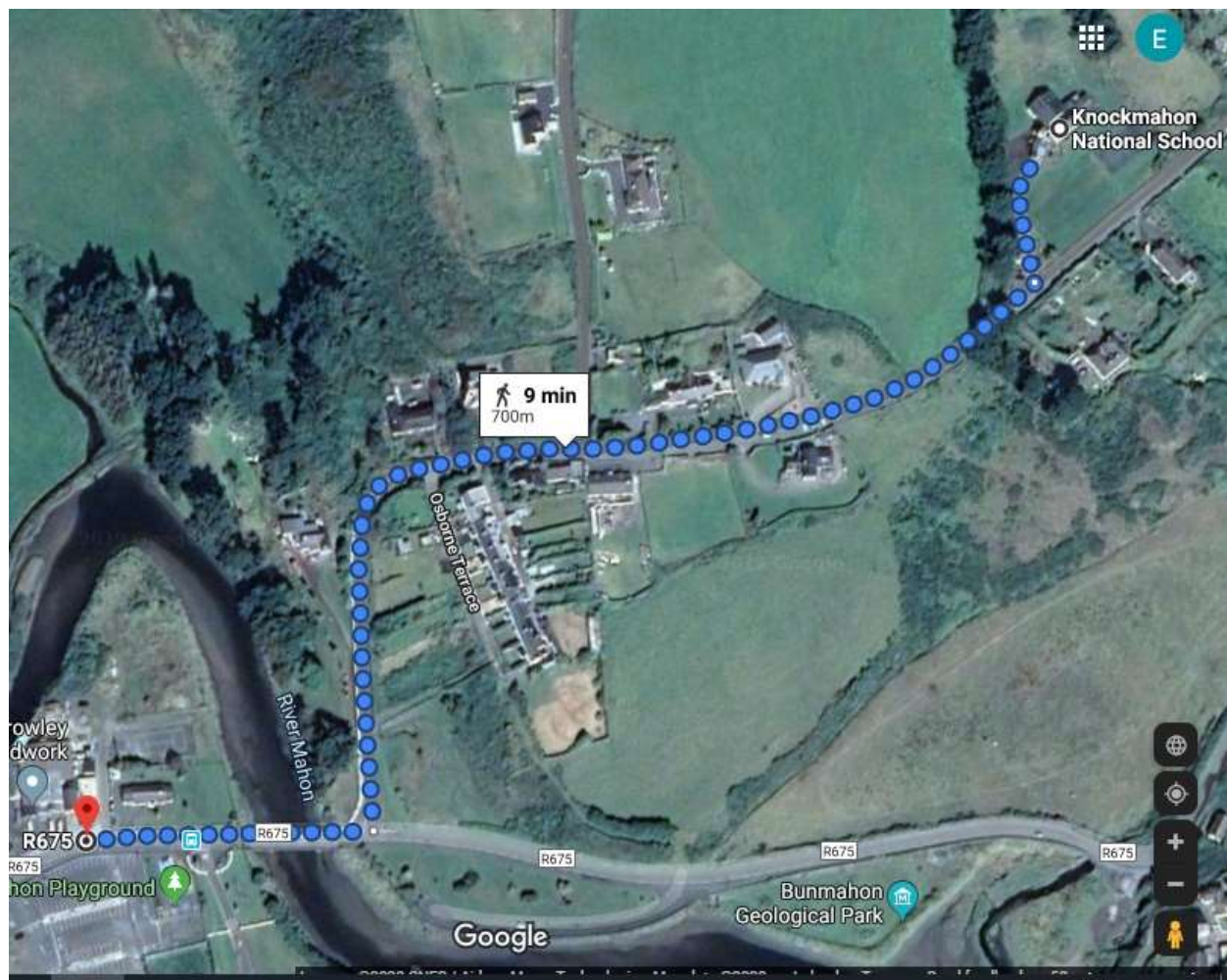
Objectives:

1. To evaluate the safety of pedestrian routes to the school.
2. To identify issues and propose possible solutions.

Where did we go?

Description of the route audited:

We walked from the school to the Playground Car Park in Bonmahon.



Summary of our findings

We noted the following findings from our Walkability Audit:

Positives:

1. There is a wall and gates around the school
2. There is designated disabled parking outside the school
3. There is a footpath around the school carpark
4. There is keep clear hatching outside the school gate
5. There are good road markings and signage on approach to the school
6. There is a good footpath from the Copper Coast Geopark Visitor Centre into Bonmahon
7. On the route we passed over the River Mahon which has beautiful wildlife
8. There is a dished footpath at the crossing to the playground car park
9. There is ample parking at the playground
10. 22 cars passed while we were on the route between 1:40 and 2:20. 15 of which were deemed to be travelling at a safe speed.

Negatives:

1. The parking at the school is limited
2. The street lighting from the school into the village could be improved close to the school
3. There is no footpath between the school and the Copper Coast Geopark Visitors Centre
4. There are repairs required to footpath along the R675

More details and photos of these findings can be viewed in the pages following.

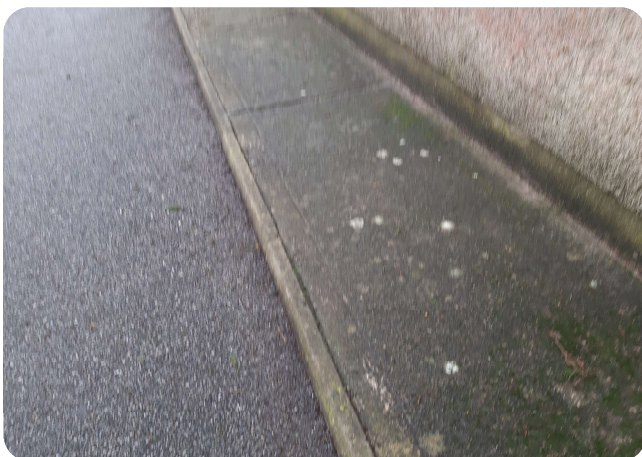
Positive details of our findings



There is a wall and gates around the school



There is designated disabled parking outside the school



There is a footpath around the school carpark



There is keep clear hatching outside the school gate

Positive details of our findings



There are good road markings and signage on approach to the school



There is a good footpath from the Copper Coast Geopark Visitor Centre into Bonmahon



On the route we passed over the River Mahon which has beautiful wildlife



There is a dished footpath at the crossing to the playground car park

Positive details of our findings



There is ample parking at the playground

Negative details of our findings



The parking at the school is limited



The street lighting from the school into the village could be improved close to the school



There is no footpath between the school and the Copper Coast Geopark Visitors Centre



There are repairs required to footpath along the R675

Recommendation 1 of 4

Parking outside the school

Issue 1:

The parking at the school is limited

Recommendation 1:

Encourage carpooling or park n stride



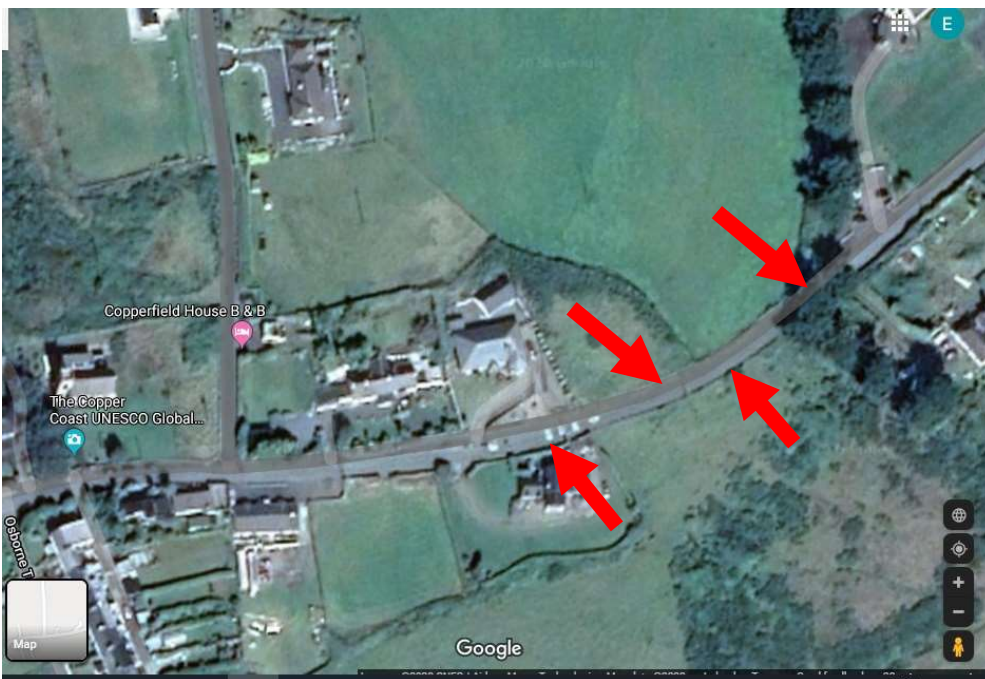
Recommendation 2 of 4 Street Lighting

Issue 2:

The street lighting from the school into the village could be improved close to the school

Recommendation 2:

Additional street lighting to be installed



Recommendation 3 of 4 Footpaths

Issue 2:

There is no footpath between the school and the Copper Coast Geopark Visitors Centre

Recommendation 2:

Footpath to be installed between the school and the Copper Coast Geopark Visitors Centre



Recommendation 4 of 4

Footpath repairs

Issue 2:

There are repairs required to footpath along the R675

Recommendation 2:

Repairs to be carried out on the footpath along the R675



Thank you

Thank you for reading our report.

Please contact us with your feedback using the details below.

Green-Schools Travel Education Officer

Edwina Coman

Email: ecoman@eeu.antaisce.org

Phone: 087 7917562

School Details:

Name: Greta Whelan

School: Knockmahon NS

Bonmahon

Co. Waterford

Email: knockmahonns@gmail.com

Phone: 051 292500